

## Air quality

Capita Symonds has the expertise and experience to provide a comprehensive range of professional air quality management and impact assessment services.



Due to the increased recognition of the risks to health and the environment of air pollution, air quality has become a material consideration in planning decisions. It has also become a significant issue to the public who have a decreasing tolerance of airborne nuisance.

Our skills and experience in modelling, the management and interpretation of monitoring programmes and the development and implementation of air quality management plans enable us to tailor services to meet the environmental and technical needs of a diverse range of projects. Our regulatory knowledge allows us to undertake feasibility studies and impact assessments and provide cost effective nuisance, mitigation and abatement advice.

We have experience in undertaking complex assessments in the energy generation, road and rail traffic, and construction sectors. We also have experience in identifying and resolving odour nuisance issues for a variety of industries. Our project portfolio includes assessments of the Tottenham Hale Gyratory Improvement Scheme, Parkside Colliery Redevelopment and Oxford City Centre redevelopment.

Our specialist services include:

Screening Assessments

Atmospheric Dispersion Modelling

Construction impact assessments

Monitoring Strategy Development and Implementation

Air quality management strategy development

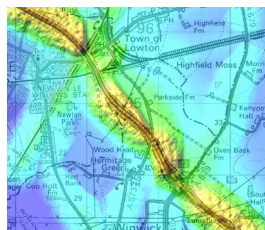
Nuisance (odour and dust) management

Local Authority Review and Assessment

Biomass Impact Assessment

## Screening Assessments

The team has extensive experience in assessing existing air quality in relation to the likely impacts of new developments. This enables us to recommend the most cost effective assessment strategy. We have proven expertise in the government recognised DMRB and WebTAG transport screening methodologies.

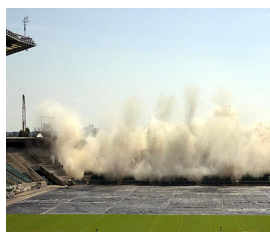


## Atmospheric dispersion modelling

Modelling is undertaken to quantify existing baseline conditions and predict the likely impacts of new developments. Such modelling is used to comply with planning guidance note PPS23, IPPC regulations and individual Local Authority requirements. The team has the skills and experience to use advanced models (ADMS and AERMOD) to assess the impact of proposed changes in traffic, industrial and nuisance sources on local receptors.

## Construction Impact Assessment

Construction activities need to be carried out with minimal impact on surrounding communities. We examine such schemes and recommend mitigation measures to reduce potential impacts on air quality to an acceptable level. Such assessments involve the cooperation of the developer, local authorities and the local communities and we help facilitate this cooperation for air quality issues associated with a construction project.



## Monitoring Strategy Development and Implementation

Monitoring regimes are increasingly becoming a requirement of planning permission. Our team have hands-on experience in the development and deployment of monitoring networks, incorporating both passive and automatic equipment to measure nitrogen dioxide, particulates and dust deposition levels.

## Air Quality Management Strategy Development

Our skills and experience are used to understand the factors affecting air quality and to identify points of intervention which will deliver improvements. This work involves consultation with stakeholders and source apportionment to ensure that the most cost effective solutions are found. The resulting strategies are essential tools in ensuring compliance with national and international air quality objectives and standards and in the control of nuisance.

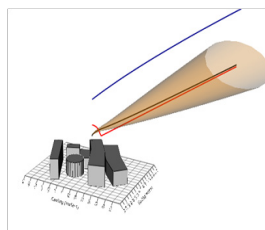
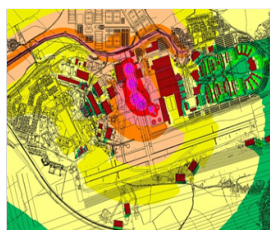


## Nuisance Management

We provide guidance as to whether a particular odour or dust issue can be regarded as a nuisance, where and how the nuisance is being generated and how the nuisance can be mitigated. Our independent status allows us to act on behalf of either those who may be responsible for or those subjected to a nuisance.

## Local Authority Review and Assessment

Our team has wide ranging experience in the Local Authority Review and Assessment and Action Planning process. This enables us to support public bodies through both assessment of local air quality and peer review of air quality reports submitted in support of planning applications.



## Biomass Impact Assessment

The UK Air Quality Strategy (AQS) includes a target to reduce urban particulate levels, which may be compromised by solid biomass boilers which emit high levels of particulates. Our team has the expertise to determine whether there are any issues with biomass burning in a particular location. If necessary, specification of mitigation measures will enable applicants to demonstrate that the proposed facility meets sustainability requirements whilst reducing health impacts.

[www.capitasymonds.co.uk/airquality](http://www.capitasymonds.co.uk/airquality)

Please contact:

Jorge Gomez, Senior Air Quality Consultant, 1 Procter Street London WC1V 6DW

Tel: +44 (0) 207 611 9792

Mob: +44 (0) 77993 40150

[jorge.gomez@capita.co.uk](mailto:jorge.gomez@capita.co.uk)