

ecology

A complete ecological design and management service from Capita Symonds
providing specialist skills and experience to meet your needs.



Capita Symonds offers a comprehensive range of ecological services to private, public and voluntary sectors. We work with clients to offer ecological advice and solutions at all stages of a project and tailor our services to meet their needs.

As environmental legislation and enforcement become ever more stringent and public concern about the natural environment grows, ecological survey, assessment and protection of the country's biodiversity is an increasingly critical stage in the planning and development process. This input aids the project development process to ensure compliance with current environmental legislation and planning policies.

From protected species surveys to environmental and ecological impact assessments, the range of ecological services we offer at Blackburn reflects our progressive attitude when faced with ecological challenges. We are dedicated to supplying our clients with a professional service that offers real value for money.

Services offered include:

extended phase 1 and other habitat surveys
GPS/GIS mapping
licence applications
management plan production
mitigation and compensation scheme design

protected species surveys
research and monitoring
scoping, desk studies & consultations
site appraisals and environmental assessments,
including BREEAM

CAPITA SYMONDS

successful people, projects and performance



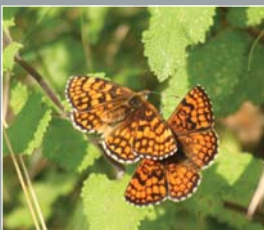
Shorey Bank, REMADE

Capita Symonds, on behalf of Blackburn with Darwen Borough Council, was commissioned to prepare Outline Proposals for the reclamation of partially derelict and under-used land known as Shorey Bank close to Darwen town centre. Capita Symonds ecologists carried out a series of ecological surveys and site appraisals to establish the presence or absence of protected or otherwise important species and habitats. We evaluated the nature conservation status of the site to assess the likely impact of proposed works on the ecology and to inform outline mitigation and aftercare proposals. The ecology team were an integral part of the design team throughout the project.



Motorway Network

Capita Symonds is providing the ecology services to A-One+ (a consortium of Halcrow, Colas and Costain), who are commissioned by the Highways Agency as the Managing Agents for Area 10 of the motorway network and trunk road network. The ecology team is carrying out protected species surveys (including bats, great crested newts, barn owls, otters and reptiles) as well as habitat surveys and assessments. Recent pieces of work include surveying for bat roost in a bridge in Greater Manchester and surveying for bats and great crested newts along a section of the M61.



Bolton Feeder Route: West Pennine Bridleway Link

The Pennine Bridleway National Trail is one of 13 National Trails in England, but the only one in the north. A feature of the trail is the number of feeder routes linking to it, one of which is the Bolton Feeder Route which will effectively link the Rivington and Smithills areas with the National Trail. Specific work undertaken by the ecology team includes an initial extended phase 1 habitat survey. This survey was used to then identify any potential for protected or otherwise notable species and habitats and to inform the need for further more detailed surveys. As a result of this, we have carried out further survey work including breeding birds, phase 2 NVC habitat survey, badgers and water voles. This work is ongoing and the ecology team will continue to advise on ecological issues that may arise.



Lancashire Building Schools for the Future (BSF)

Capita Symonds, working as part of the Catalyst Lend Lease Consortium, was appointed in 2006 to deliver Lancashire County Council's BSF programme. Capita Symonds is providing ongoing ecological advice for Lancashire BSF schools, including protected species, legislative and planning advice to enable the progress of the development in line with wildlife and conservation legislation. Throughout this process, BREEAM (BRE's Environmental Assessment Method) is being used to assess the environmental performance of the schools. The building is assessed in eight areas, one of which is Land Use and Ecology.



Blackburn Building Schools for the Future (BSF)

Capita Symonds, working as part of the Catalyst Lend Lease Consortium, was appointed to undertake environmental assessments of five sites in relation to the Blackburn BSF programme. Field surveys were carried out to assess what habitats and species might be affected by any development proposals, to evaluate the conservation status of the site and inform on what further surveys, including protected species surveys, may be required for the environmental assessment.



Darwen Academy

Capita Symonds ecologists have been working in partnership with Blackburn with Darwen Borough Council to help alleviate the issue of Japanese Knotweed on the site of the proposed new Darwen Academy. Japanese Knotweed is a non-native invasive weed which can be a particular problem to development and the treatment of Japanese Knotweed is subject to strict legislation.

Please contact:

Fiona Sharpe

Tel: 01254 273308

fiona.sharpe@capita.co.uk

www.capitasymonds.co.uk